



## Eshaal Hi-Vis Zipped Sweatshirt

Get seen, and get comfortable at work with the Eshaal Hi-Vis Zipped Sweatshirt. Made with high-quality materials and designed with side panelling for a smartly fitted shape, this sweatshirt is no-brainer for your workwear collection. Whether you're on a construction site or working in other challenging environments, this practical sweatshirt is an essential workwear piece.

### Features

- EN ISO 20471 Class 2 (Sizes 8 - 10)
- EN ISO 20471 Class 3 (Sizes 12 - 22)
- RIS-3279-TOM (Orange only)
- 2 band & brace
- Angled hi-vis bands on the front
- 2 side entry pockets
- Center front zip fastening
- Rib cuff for extra comfort
- Ribbed hem
- Side panelling provides a shaped fit

### Fabric

- Main - 100% Polyester

### Applications

Tasks with a hi-vis requirement – traffic, security, event marshalling, driving, construction, roadworks, rail/underground (Orange version only)

### Packaging

1 piece per bag - 20 bags per case



### Product Code

SHV-L65141-8	8 - 22	NEW! Eshaal Zipped Sweatshirt - Yellow
SHV-L65181-8	8 - 22	NEW! Eshaal Zipped Sweatshirt - Orange

### Washcare Symbols



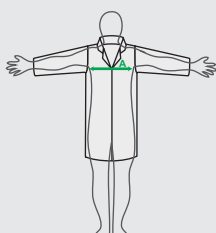
### Standards



PPE Regulation (EU) 2016/425 as retained in the UK and amended.  
EN ISO 20471:2013+A1:2016- High Visibility Warning Clothing for Professional Use  
RIS-3279-TOM - Rail Industry Standard (Orange Garment Only)



### Size Chart



Measurements in cm	8	10	12	14	16	18	20	22
To fit (A)	88 - 92	92 - 96	96 - 100	100 - 104	104 - 108	108 - 112	112 - 116	116 - 120

Issue No.: 1

Issue Date: 09.02.2023